

Logistical Resilience as a Key Response to Asymmetric Threats

BG (ret.) Meir Elran
Institute for National Security Studies INSS

Latrun, September 6th, 2011

MAIN POINTS

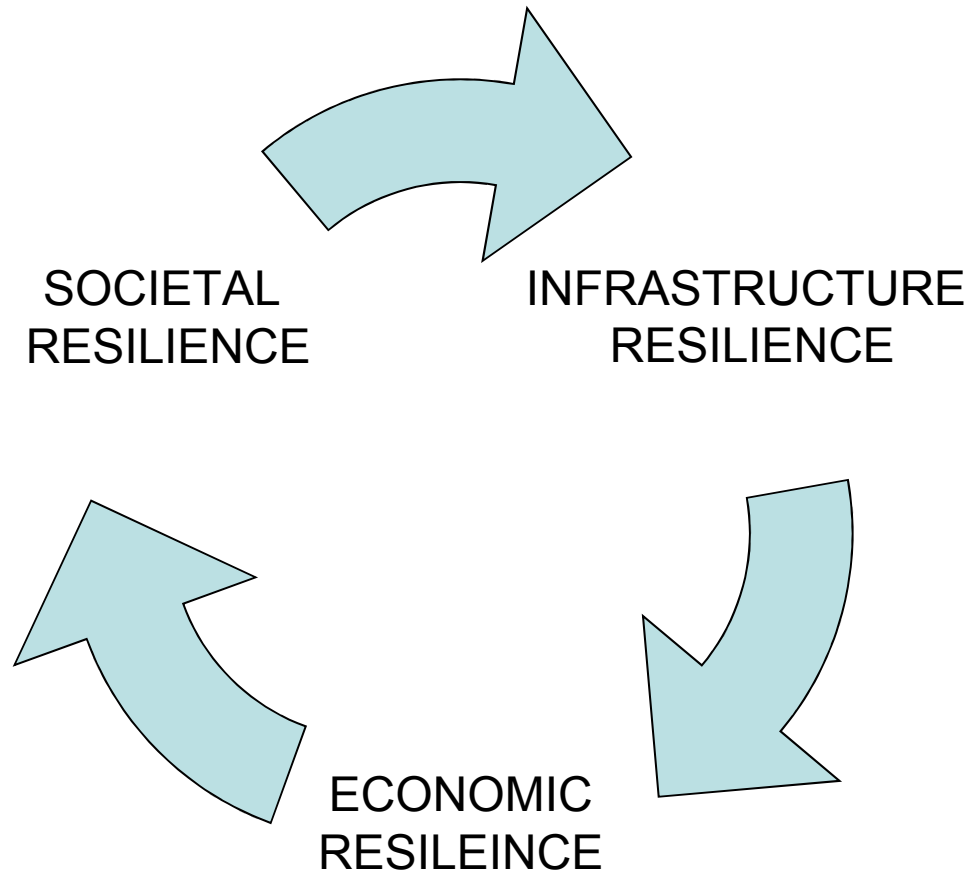
- THE ESSENCE OF RESILIENCE AND ITS MEANING IN LOGISTICS
- RESILIENCE AS A KEY RESPONSE TO THREATENED SYSTEMS
- THE ISRAELI SCENARIO: MILITARY / CIVILIAN FRONTS
- THE ESSENCE OF THE THREAT AND RESPONSE

THE PRINCIPAL PROPOSITION: A RESILIENT LOGISTICAL SYSTEM IS IMPERATIVE TO STAND UP TO FUTURE THREATS

DEFINITION OF RESILIENCE

THE CAPACITY OF A SYSTEM TO (a) CONTAIN MAJOR CATASTROPHES, (b) TO REACT IN ACCORDANCE WITH THEIR SEVERITY AND LENGTH, (c) TO **BOUNCE BACK** QUICKLY, AND (d) TO RETURN TO IMPROVED AND EFFECTIVE FUNCTIONALITY.

NATIONAL RESILIENCE



LOGISTICAL RESILIENCE

LOGISTICAL RESILIENCE - AS PART OF THE INFRASTRUCTURE RESILIENCE - IS MANIFESTED BY THE CAPACITY OF THE CRITICAL CIVILIAN, SECURITY AND MILITARY SYSTEMS:

- (A) TO PROVIDE THE REQUIRED SUSTAINABLE FUNCTIONING FOR THE DURATION OF THE CONFLICT, IN THE CONTEXT OF EXPOSURE TO PROTRACTED AND EXTENDED DAMAGE
- (A) TO PRODUCE AN EFFECTIVE **SYSTEMIC RECOVERY** SHORTLY FOLLOWING MAJOR DIRUPTIONS

ISRAEL'S SECURITY THREATS

- ASYMETRIC ENVIRONMENT
- ONE FRONT; TWO FRONT; TOTAL CONFLICT
- TERROR'S TARGET: TO CREATE CHAOS AND DEMORALIZATION
- FROM NUISANCE VALUE TO STRATEGIC THREAT
- HTWS: QUANTITIES, RANGE, WARHEADS, PRECISION (IN THE FUTURE)
- NEXUS BET. THE MIL. AND CIVILIAN FRONTS
- THE NATIONAL DILEMMA: DEFENSE / OFFENSE
- THE CYBER THREAT

RAMIFICATIONS FOR THE LOGISTICAL SYSTEM

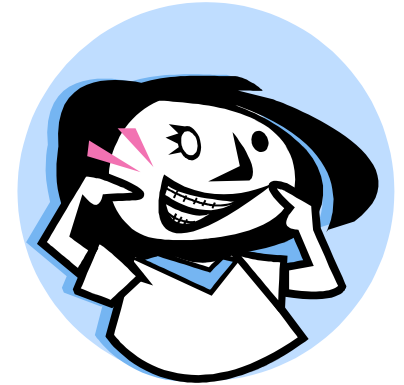
- ALL COMPONENTS NEED TO RELATE TO THE THREAT
- DIRECT HIT OF CRITICAL INSTALATIONS / SERVICES
- DISRUPTION OF THE LINKS BET. THE CIVILIAN AND MILITARY SYSTEMS
- EXPANDED AND CLOSE ASSISTANCE FOR THE CIVILIAN POPULATION & INFRASTRUCTURE WILL BE REQUIRED
- RESERVES / CIVILIAN WORKERS

PRINCIPAL RESPONSE

- DETERRANCE, THWARTING & PREVENTION
- ACTIVE / PASSIVE DEFENSE
- PRIMARY ASSUMPTION: NOT SUFFICIENT TO ANNUL DISASTERS
- **CONSTRUCTION OF LOGISTICAL RESILIENCE**
- SYSTEMIC & PARTICULAR PLANNING – PRIORITIZATION
- EARLY AND CONTINUOUS DEPLOYMENT

IMPLICATIONS OF THE CONSTRUCTION OF LOGISTICAL RESILIENCE

- AWARENESS TO THE STRATEGIC TRANSFORMATION + EARLY PREPAREDNESS
- BALANCED FOCUS ON DEFENSE
- CONNECTIVITY WITH THE CIVILIAN SYSTEMS
- PLANNING AND PRACTICING SCENARIOS OF DAMAGE AND RECOVERY
- DISPERSAL AND CONCEALMENT
- REDUNDANCY
- PREPARATION OF THE CADRES (+ MENTALLY)
- BUDGET CONSIDERATIONS



THANKS FOR BEING ATTENTIVE

Questions? Remarks?

Elran_m@bezeqint.net